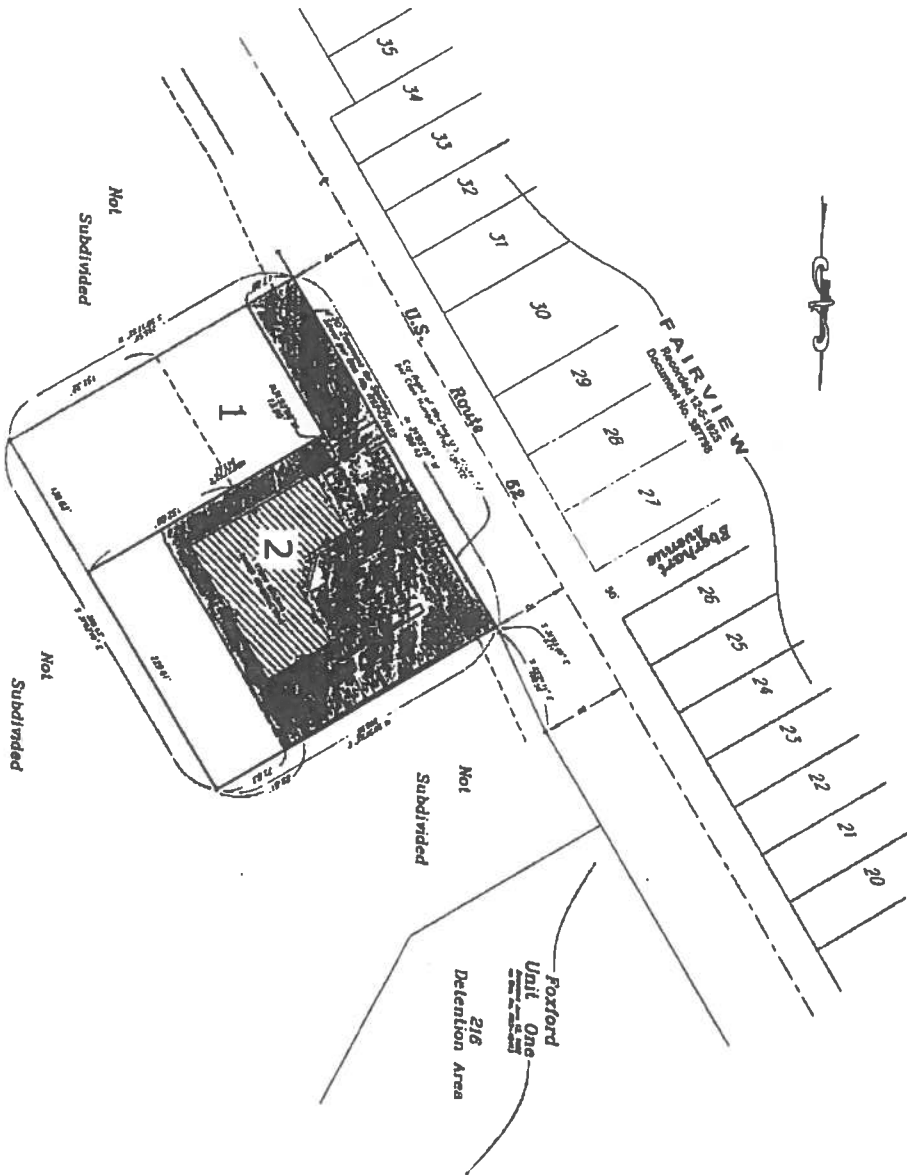


12002156098

PLAT OF CONDOMINIUM LOT 2, CRESCENZO COMMONS



NOT TO SCALE
 THIS PLAN IS A PRELIMINARY PLAN AND IS SUBJECT TO THE APPROVAL OF THE LOCAL GOVERNMENT AND THE STATE DEPARTMENT OF REVENUE. IT IS NOT TO BE USED FOR ANY OTHER PURPOSE.

PLAT OF CONDOMINIUM
 LOT 2, CRESCENZO COMMONS
 12002156098

Denotes Egress/Figure - Parking
 & Public Utility Easement

12002156098

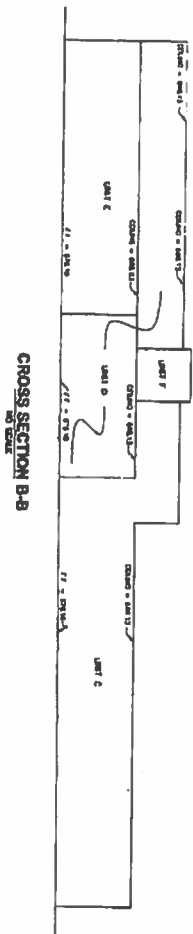
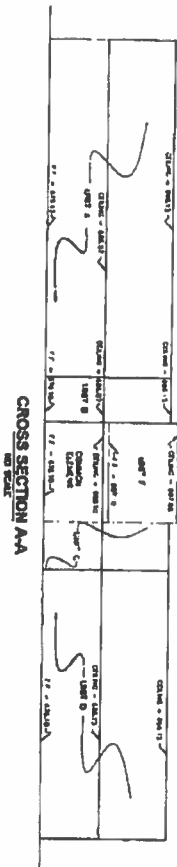
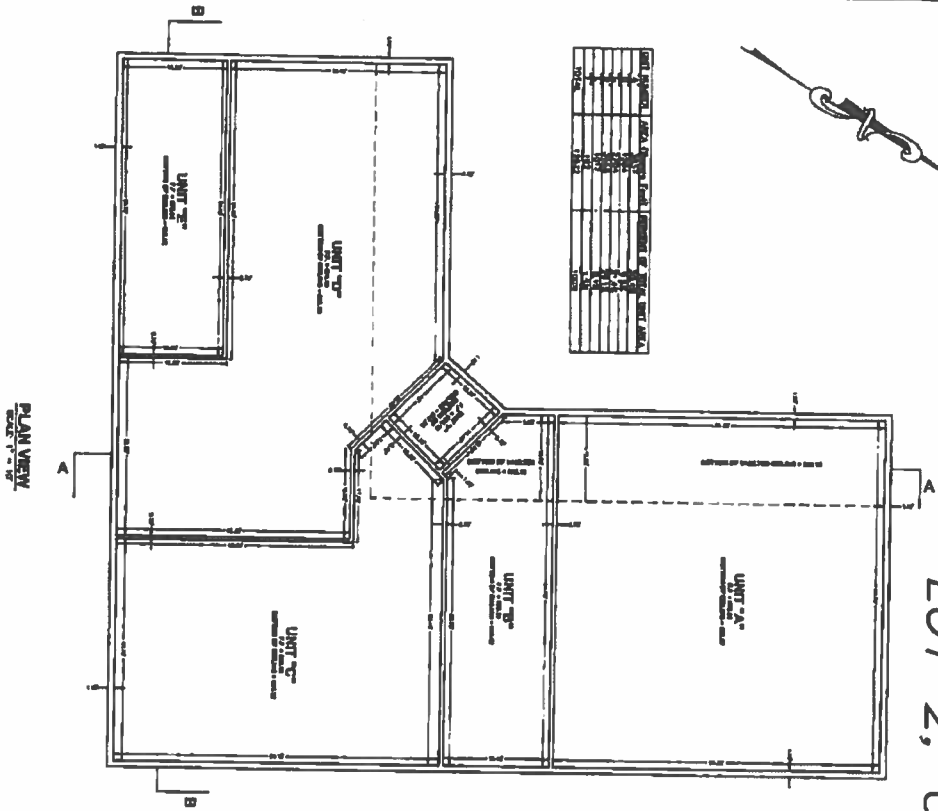
PLAT OF CONDOMINIUM
 LOT 2, CRESCENZO COMMONS
 12002156098

PLATT, TONDA & ASSOCIATES, INC.
 10000 Rte. 100, Suite 100
 Fairfax, VA 22031
 (703) 261-1000

DATE: 12/15/09

BY: [Signature]

R 2001235028
PLAT OF CONDOMINIUM
LOT 2, CRESCENZO COMMONS



- NOTES:
1. DIMENSIONS SHOWN ARE THE CENTER TO CENTER OF THE UNITS AND COMMONS. THE CENTER OF GRAVITY OF THE UNITS IS SHOWN BY THE CENTER OF GRAVITY OF THE COMMONS.
 2. DIMENSIONS SHOWN ARE THE CENTER TO CENTER OF THE UNITS AND COMMONS.
 3. DIMENSIONS SHOWN ARE THE CENTER TO CENTER OF THE UNITS AND COMMONS.

1. COMMONS

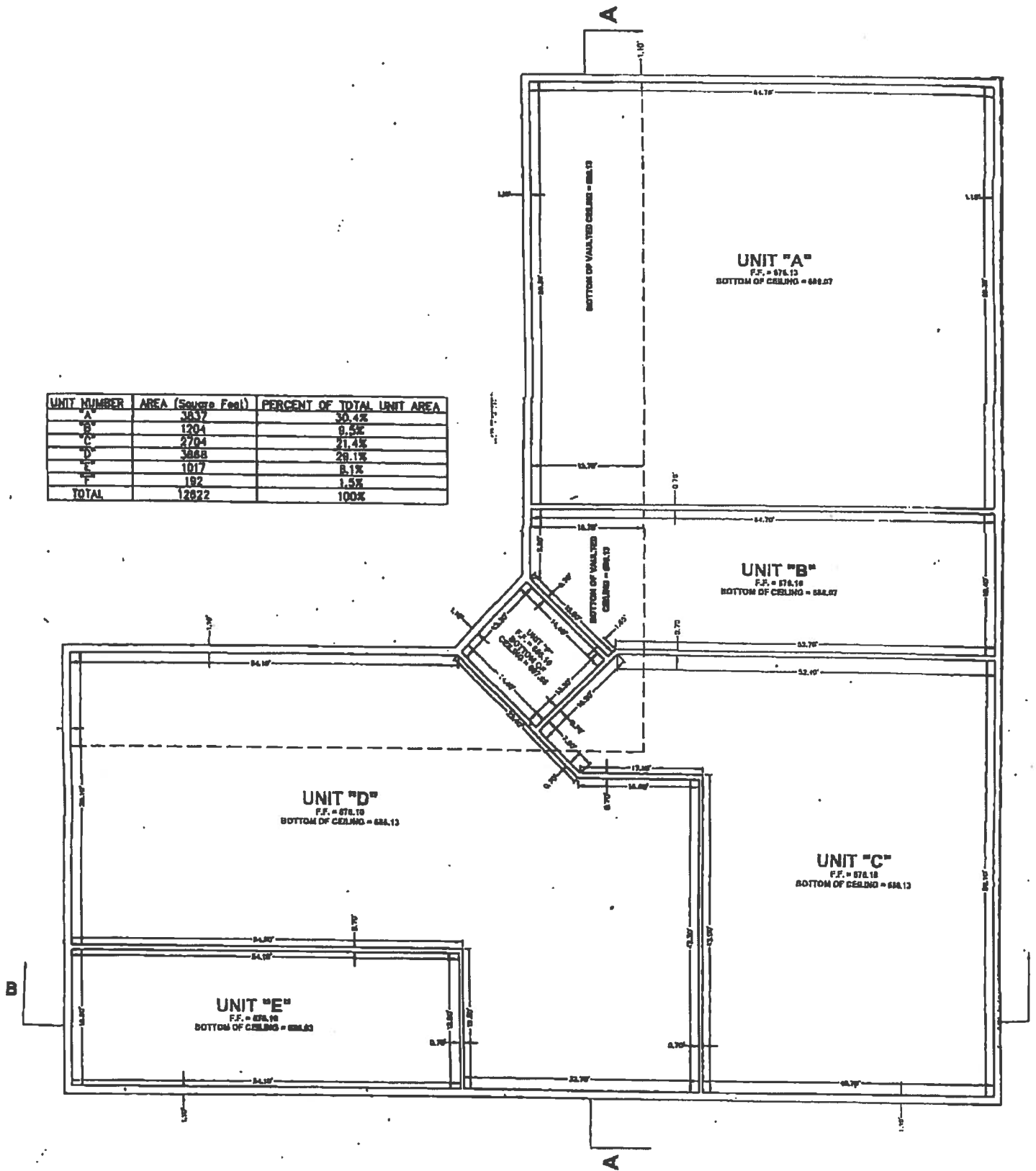
2. COMMONS

SHEET 2 OF 2

PREPARED BY: **REITINGER, TONELLI & ASSOCIATES, INC.**
 1000 BROADWAY, SUITE 1000
 NEW YORK, N.Y. 10018
 ARCHITECTS

PLAT OF CONDOMINIUM LOT 2, CRESCENZO COMMONS

UNIT NUMBER	AREA (Square Feet)	PERCENT OF TOTAL UNIT AREA
A	3837	30.4%
B	1204	9.5%
C	2704	21.4%
D	3868	29.1%
E	1017	8.1%
F	192	1.5%
TOTAL	12822	100%



PLAN VIEW
SCALE: 1" = 10'