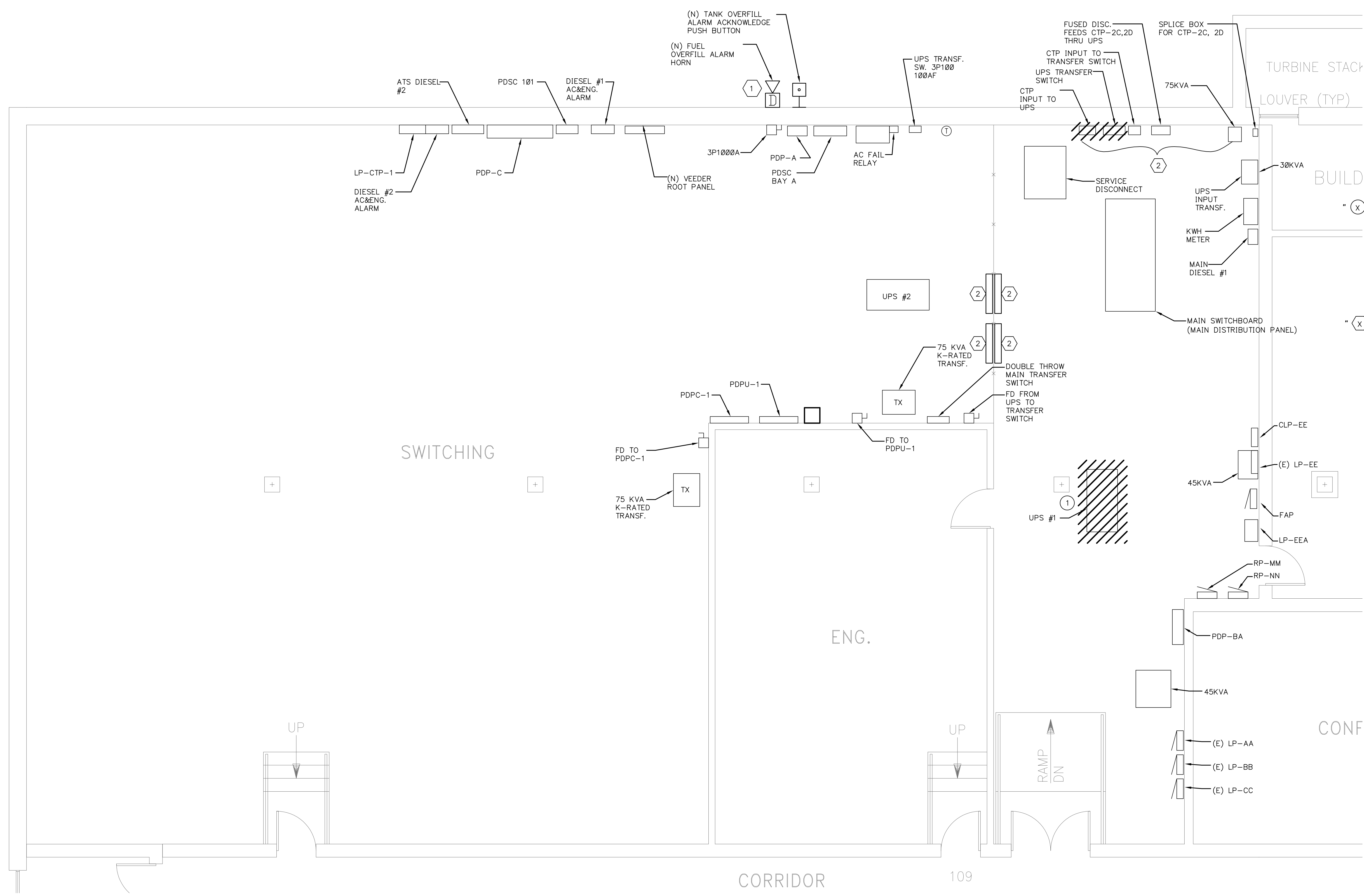


FILE INFO: F:\Sector833\Projects\AST\DEF-00015687-A0 Livonia MW Hq. DTE Energy New Service\1172\1172e401.dwg PLOTTED: Mar 02, 2012 10:06am BY: luvireh1 PLOT SCALE: 1=96
 XREFS: MODIFIED: Mar 02, 2012 9:48am



GENERAL NOTES:

1. ALL ITEMS SHOWN ARE EXISTING AND TO REMAIN UNLESS OTHERWISE NOTED.
2. INCLUDE REMOVAL OF ALL HANGERS, SUPPORTS AND WIRING ASSOCIATED WITH DEMOLISHED ELECTRICAL ITEMS.
3. REFER TO G0.01, M0.01 AND SELECTIVE DEMOLITION ARTICLE IN SECTION 15050 FOR ADDITIONAL DEMOLITION REQUIREMENTS.
4. COORDINATE WITH ARCHITECTURAL AND MECHANICAL DWGS.

DEMOLITION KEY NOTES

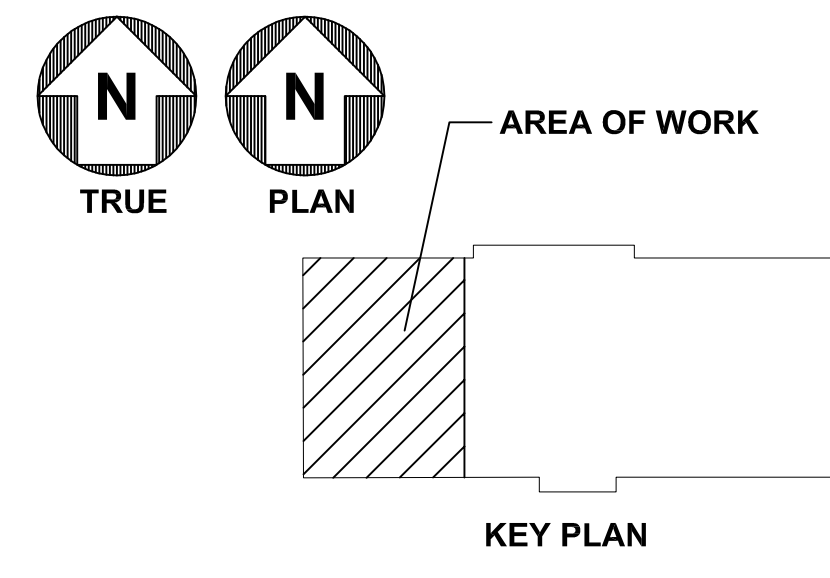
1. REMOVE UPS POWER AND CONTROLS BACK TO SOURCE. REFER TO ONE-LINE ON SHEET E7.02. COORDINATE DEMOLITION AND REMOVAL WITH OWNER'S CONSTRUCTION REPRESENTATIVE TO DETERMINE EXTENT OF DEMOLITION. BATTERY DISPOSAL BY OWNER.

NEW WORK KEY NOTES

1. OVERFILL SIGN. REFER TO DETAIL #2 ON E5.01.
2. PROVIDE NEW ONE-LINE DIAGRAM FRAMED IN GLASS AND INCLUDE AS-BUILT CHANGES. POST ON EACH SIDE OF FENCE IN MAIN ELECTRICAL ROOM. PROVIDE ONE ROOLED UP SET IN GENSSET MODULE.
3. REFER TO E7.01 FOR DEMOLITION THIS AREA.

ISSUE DATE:	11/29/07
FOR:	RECORD DRAWINGS
ISSUED BY:	C&B
ISSUE DATE:	4/18/07
FOR:	REVISION #2
ISSUED BY:	K.T.
ISSUE DATE:	4/09/07
FOR:	REVISION #1
ISSUED BY:	K.T.
ISSUE DATE:	3/13/07
FOR:	ADDENDUM #1
ISSUED BY:	MJN
ISSUE DATE:	12/21/06
FOR:	MDEQ SUBMITTAL
ISSUED BY:	K.T.

1 LOWER LEVEL PARTIAL FLOOR PLAN
 SCALE: 1/4" = 1'-0"



CONSULTANT STAMP

Carter & Burgess
 CARTER & BURGESS CONSULTANTS, INC.
 30800 TELEGRAPH RD., SUITE 4900
 BINGHAM FARMS, MICHIGAN 48025

C&B JOB NUMBER:
 371172

REVISIONS / AUTHORIZATIONS			
NO.	REVISIONS / AUTHORIZATIONS	DATE	BY
1	85% REVIEW	12/8/06	K.T.
2	OWNER REVIEW	12/15/06	K.T.
3	OWNER REVIEW	02/15/07	K.T.
4	CONSTRUCTION	02/22/07	K.T.

PROPRIETARY AT&T INFORMATION
 NOT FOR GENERAL USE OR DISCLOSURE OUTSIDE OF AT&T
 THIS INFORMATION MAY ONLY BE USED BY AUTHORIZED PERSONNEL OF
 THE LOCAL GOVERNMENT AGENCY IN CONNECTION WITH APPLICATION FOR
 PERMITS AND AUTHORIZATIONS FOR BUILDINGS, CONSTRUCTION, AND/OR
 ZONING CHANGES.

DRAWINGS PREPARED FOR

at&t CORPORATE REAL ESTATE

PROJECT TITLE:
AST REPLACEMENT
 31100 PLYMOUTH ROAD
 LIVONIA, MI

CLLC M64228

SHEET TITLE:
LOWER LEVEL PARTIAL FLOOR PLAN

AT&T PROJECT NUMBER: M10057	DATE:	SCALE: NOTED
AT&T AUTHORIZATION:	DRAWN BY: M.N.	CHECKED BY: W.D.
AUTHORIZATION SIGNATURE:	SHEET: - OF: - SHEETS	SHEET NO. E4.01

v1.0 COPYRIGHT © 2006 by Carter & Burgess Consultants, Inc.